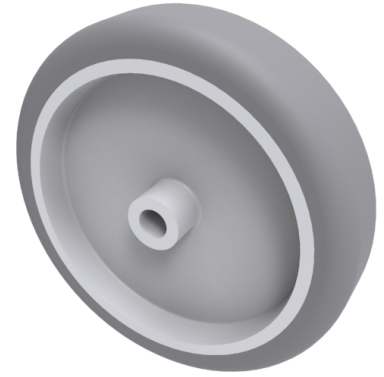


Grey Rubber 100mm Plain Bearing Wheel 60kg Load

Product code: BZL100WVGR8

Grey thermoplastic rubber on polypropylene wheel with plain bore. Wheel diameter 100mm, tread width 24mm, Hub width 27.5mm, Bore size 8mm. Load capacity 60kg



Wheel Material	Rubber on Polypropylene
Diameter (mm)	100
Load Capacity (kg)	60
Bearing Type	Plain
Bore Size (mm)	8
Tread (mm)	24
Hub Width (mm)	27.5
Colour / Shore Hardness	Grey Rubber on Polypropylene Rim / 87 Shore A
Temperature Resistance	-10 °C TO +50 °C

BIL GROUP LTD

Porte Marsh Road, Calne, Wiltshire, SN11 9BW

Registered in England No: 2603821

VAT Reg: GB572705729

