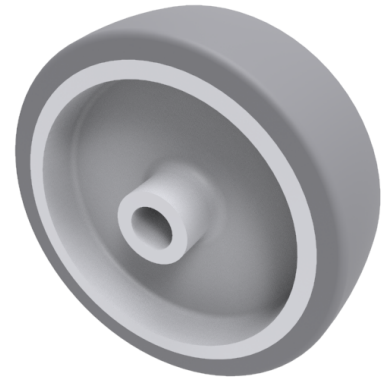


Grey Rubber 100mm Plain Bearing Wheel 80kg Load

Product code: BZM100WVGR

Grey thermoplastic rubber on polypropylene wheel with plain bore. Wheel diameter 100mm, tread width 30mm, Hub width 35mm, Bore size 12mm. Load capacity 80kg.



Wheel Material	Rubber on Polypropylene
Diameter (mm)	100
Load Capacity (kg)	80
Bearing Type	Plain
Bore Size (mm)	12
Tread (mm)	30
Hub Width (mm)	35
Colour / Shore Hardness	Grey Rubber on Polypropylene Rim / 87 Shore A
Temperature Resistance	-10 °C TO +50 °C

BIL GROUP LTD

Porte Marsh Road, Calne, Wiltshire, SN11 9BW

Registered in England No: 2603821

VAT Reg: GB572705729

