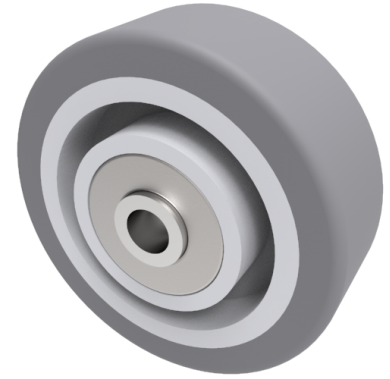


Grey Rubber 50mm Ball Bearing Wheel 40kg Load

Product code: BZL50WVGRBJM6



Grey thermoplastic rubber on polypropylene wheel with ball bearing. Wheel diameter 50mm, tread width 18mm, Hub width 21mm, Bore size 6mm. Load capacity 40kg.

Wheel Material	Rubber on Polypropylene
Diameter (mm)	50
Load Capacity (kg)	40
Bearing Type	Ball
Bore Size (mm)	6
Tread (mm)	18
Hub Width (mm)	21
Colour / Shore Hardness	Grey Rubber on Polypropylene Rim / 87 Shore A
Temperature Resistance	-10 °C TO +50 °C

BIL GROUP LTD

Porte Marsh Road, Calne, Wiltshire, SN11 9BW

Registered in England No: 2603821

VAT Reg: GB572705729

