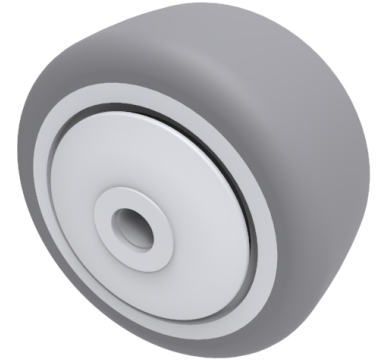


Grey Rubber 50mm Ball Bearing Wheel 50kg Load

Product code: BZL50WGRBJM6



Grey thermoplastic rubber on polypropylene wheel with ball bearing bore. Wheel diameter 50mm, tread width 24mm, Hub width 29mm, Bore size 6mm. Load capacity 50kg.

| | |
|-------------------------|---|
| Wheel Material | Rubber on Polypropylene |
| Diameter (mm) | 50 |
| Load Capacity (kg) | 50 |
| Bearing Type | Ball |
| Bore Size (mm) | 6 |
| Tread (mm) | 24 |
| Hub Width (mm) | 29 |
| Colour / Shore Hardness | Grey Rubber on Polypropylene Rim / 85 Shore A |
| Temperature Resistance | -20 °C TO +60 °C |

BIL GROUP LTD

Porte Marsh Road, Calne, Wiltshire, SN11 9BW

Registered in England No: 2603821

VAT Reg: GB572705729

