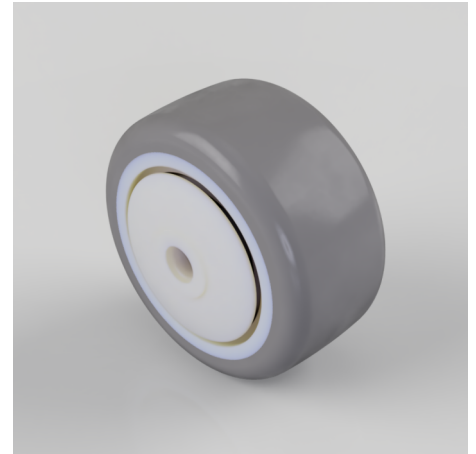


Grey Rubber 50mm Ball Bearing Wheel 50kg Load

Product code: SSL50WGRBJM6

Grey thermoplastic rubber on polypropylene wheel with Stainless steel ball bearing bore. Wheel diameter 50mm, tread width 24mm, Hub width 29mm, Bore size 6mm. Load capacity 50kg.



Wheel Material	Rubber on Polypropylene
Diameter (mm)	50
Load Capacity (kg)	50
Bearing Type	Ball
Bore Size (mm)	6
Tread (mm)	24
Hub Width (mm)	29
Colour / Shore Hardness	Grey Rubber on Polypropylene Rim / 85 Shore A
Temperature Resistance	-20 °C TO +60 °C

BIL GROUP LTD

Porte Marsh Road, Calne, Wiltshire, SN11 9BW

Registered in England No: 2603821

VAT Reg: GB572705729

