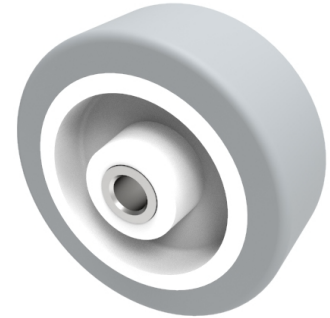


Grey Rubber 50mm Plain Bearing Wheel 40kg Load

Product code: BZED50WVGR

Grey vulcanised rubber on polypropylene wheel with plain bore. Wheel diameter 50mm, tread width 19mm, Hub width 22mm, Bore size 10mm. Load capacity 40kg



Wheel Material	Rubber on Polypropylene
Diameter (mm)	50
Load Capacity (kg)	40
Bearing Type	Plain
Bore Size (mm)	10
Tread (mm)	19
Hub Width (mm)	22
Colour / Shore Hardness	Grey Rubber on Polypropylene Rim / 87 Shore A
Temperature Resistance	-10 °C TO +50 °C

BIL GROUP LTD

Porte Marsh Road, Calne, Wiltshire, SN11 9BW

Registered in England No: 2603821

VAT Reg: GB572705729

