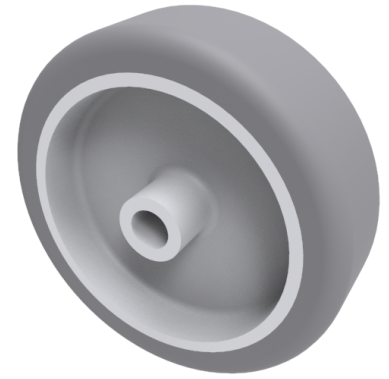


Grey Rubber 50mm Plain Bearing Wheel 50kg Load

Product code: BZL75WGR

Grey thermoplastic rubber tyred grey polypropylene centred wheel with a plain bearing. Wheel diameter 75mm, tread width 24mm bore size of 8mm hub length of 28mm. Load capacity 60kg.



Wheel Material	Rubber on Polypropylene
Diameter (mm)	75
Load Capacity (kg)	60
Bearing Type	Plain
Bore Size (mm)	8
Tread (mm)	24
Hub Width (mm)	28
Colour / Shore Hardness	Grey Rubber on Polypropylene Rim / 87 Shore A
Temperature Resistance	-10 °C TO +50 °C

BIL GROUP LTD

Porte Marsh Road, Calne, Wiltshire, SN11 9BW

Registered in England No: 2603821

VAT Reg: GB572705729

