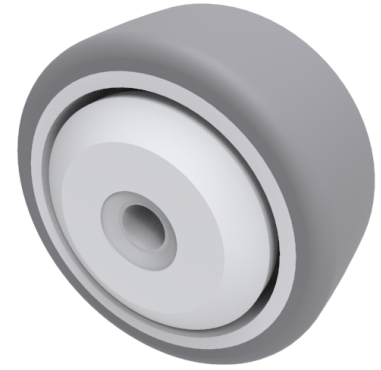


Grey Rubber 75mm Ball Bearing Wheel 70kg Load

Product code: BZM75WGRBJM10



Grey thermoplastic rubber on polypropylene wheel with single ball bearing and caps. Wheel diameter 75mm, tread width 32mm, Hub width 36mm, Bore size 10mm. Load capacity 70kg.

Wheel Material	Rubber on Polypropylene
Diameter (mm)	75
Load Capacity (kg)	70
Bearing Type	Ball
Bore Size (mm)	10
Tread (mm)	32
Hub Width (mm)	36
Colour / Shore Hardness	Grey Rubber on Polypropylene Rim / 85 Shore A
Temperature Resistance	-20 °C TO +60 °C