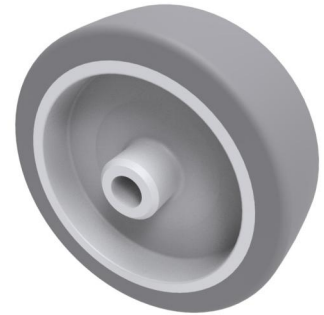


Grey Rubber 75mm Plain Bearing Wheel 60kg Load

Product code: BZL75WVGR8



Grey thermoplastic rubber on polypropylene wheel with plain bore. Wheel diameter 75mm, tread width 24mm, Hub width 29mm, Bore size 8mm. Load capacity 60kg.

Diameter (mm)	75
Load Capacity (kg)	60
Wheel Material	Rubber on Polypropylene
Bearing Type	Plain
Tread (mm)	24
Hub Width (mm)	29
Bore Size (mm)	8
Colour / Shore Hardness	Grey Rubber on Polypropylene Rim / 87 Shore A
Temperature Resistance	-10 °C TO +50 °C

BIL GROUP LTD

Porte Marsh Road, Calne, Wiltshire, SN11 9BW

Registered in England No: 2603821

VAT Reg: GB572705729

