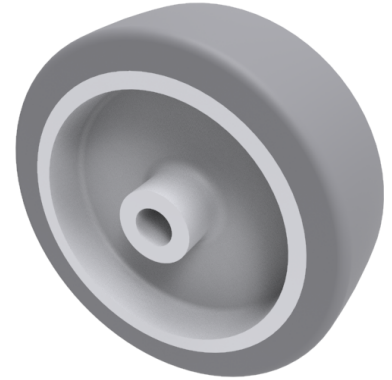


## Grey Rubber 75mm Plain Bearing Wheel 60kg Load

**Product code: BZL75WVGR8/26**

Grey thermoplastic rubber on polypropylene wheel with plain bore. Wheel diameter 75mm, tread width 24mm, Hub width 26mm, Bore size 8mm. Load capacity 60kg



Wheel Material	Rubber on Polypropylene
Diameter (mm)	75
Load Capacity (kg)	60
Bearing Type	Plain
Bore Size (mm)	8
Tread (mm)	24
Hub Width (mm)	26
Colour / Shore Hardness	Grey Rubber on Polypropylene Rim / 87 Shore A
Temperature Resistance	-10 °C TO +50 °C

### BIL GROUP LTD

Porte Marsh Road, Calne, Wiltshire, SN11 9BW

Registered in England No: 2603821

VAT Reg: GB572705729

