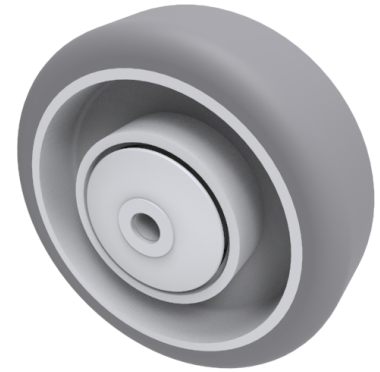


Grey Rubber 75mm Stainless Steel Ball Bearing Wheel 60kg Load

Product code: SSRA75WGRBJM6



Grey thermoplastic rubber on polypropylene wheel with single stainless steel ball bearing and caps. Wheel diameter 75mm, tread width 24mm, Hub width 29mm, Bore size 6mm. Load capacity 50kg

Wheel Material	Rubber on Polypropylene
Diameter (mm)	75
Load Capacity (kg)	60
Bearing Type	Ball
Bore Size (mm)	6
Tread (mm)	24
Hub Width (mm)	29
Colour / Shore Hardness	Grey Rubber on Polypropylene Rim / 85 Shore A
Temperature Resistance	-20 °C TO +60 °C

BIL GROUP LTD

Porte Marsh Road, Calne, Wiltshire, SN11 9BW

Registered in England No: 2603821

VAT Reg: GB572705729

