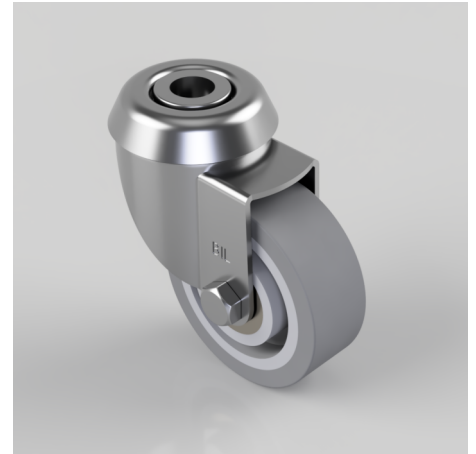


Grey Rubber Bolt Hole Swivel Castor 50mm 40kg Load

Product code: BZD50VGRBJBH10

Pressed steel swivel castor with a 10mm bolt hole fitted with grey thermoplastic rubber tyred on grey polypropylene centred wheel with a ball bearing. Wheel diameter 50mm, tread width 18mm, overall height 68mm, Load capacity 40kg.



Diameter (mm)	50
Fixing Option	Bolt Hole
Castor Type	Swivel
Head Dia (mm)	40
Height (mm)	68
Bearing Type	Ball
Swivel Radius (mm)	48
Wheel Material	Rubber on Polypropylene
Colour / Shore Hardness	Grey Rubber on Polypropylene Rim / 87 Shore A
Fork Thickness (mm)	1.5
Temperature Resistance	-15 °C TO +45 °C
To Suit Fixing Bolt (mm)	10
Tread (mm)	18
Load Capacity (kg)	40