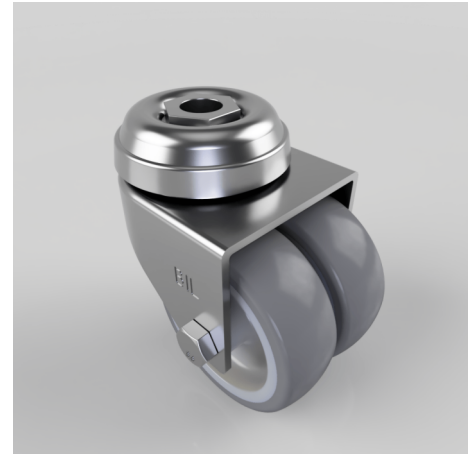


Grey Rubber Bolt Hole Swivel Castor 50mm 55kg Load

Product code: 2BZD50VGRBH10

Twin wheeled swivel castor with a 10mm bolt hole fitted with 2 grey thermoplastic rubber tyre on grey polypropylene wheels with plain bores. Wheel diameter 50mm, tread width 2 x 18mm, overall height 73mm, load capacity 55kg.



Diameter (mm)	50
Fixing Option	Bolt Hole
Castor Type	Swivel
Head Dia (mm)	45
Height (mm)	68
Bearing Type	Plain
Swivel Radius (mm)	49
Wheel Material	Rubber on Polypropylene
Colour / Shore Hardness	Grey Rubber on Polypropylene Rim / 87 Shore A
Fork Thickness (mm)	2
Temperature Resistance	-15 °C TO +45 °C
To Suit Fixing Bolt (mm)	10
Tread (mm)	2 x 18
Load Capacity (kg)	60

BIL GROUP LTD

Porte Marsh Road, Calne, Wiltshire, SN11 9BW

Registered in England No: 2603821

VAT Reg: GB572705729

