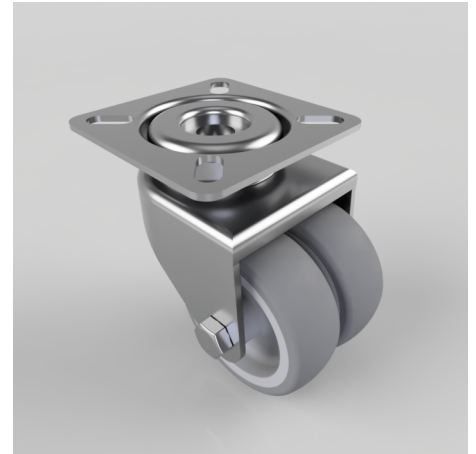


Grey Rubber Bolt Hole Swivel Castor 50mm 60kg Load

Product code: 2BZA50VGRBH10

Pressed steel twin wheel swivel castor with a 10mm bolt hole fixing fitted with 2 grey thermoplastic rubber tyred grey polypropylene centred wheels with a plain bore. Wheel diameter 50mm, tread width 18mm x 2, overall height 73mm. Load capacity 60kg.



| | |
|--------------------------|---|
| Diameter (mm) | 50 |
| Fixing Option | Bolt Hole |
| Castor Type | Swivel |
| Head Dia (mm) | 41 |
| Height (mm) | 73 |
| Bearing Type | Plain |
| Swivel Radius (mm) | 53 |
| Wheel Material | Rubber on Polypropylene |
| Colour / Shore Hardness | Grey Rubber on Polypropylene Rim / 87 Shore A |
| Fork Thickness (mm) | 2 |
| Temperature Resistance | -15 °C TO +45 °C |
| To Suit Fixing Bolt (mm) | 10 |
| Tread (mm) | 2 x 18 |
| Load Capacity (kg) | 60 |