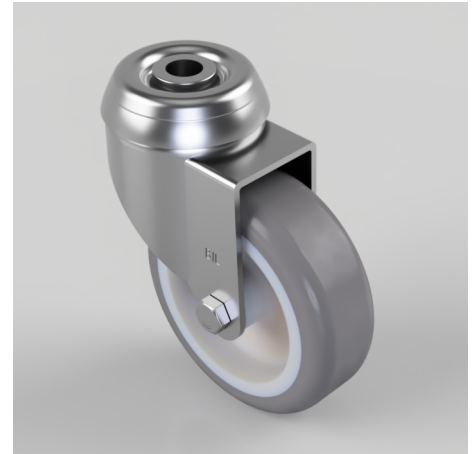


Grey Rubber Bolt Hole Swivel Castor 75mm 50kg Load

Product code: BZD75TPRBH10

Pressed steel swivel castor with a 10mm bolt hole fitted with a grey thermoplastic rubber tyre on a grey polypropylene centred wheel with a Plain Bore. Wheel diameter 75mm, tread width 24mm, overall height 99mm. Load capacity 50kg



Diameter (mm)	75
Fixing Option	Bolt Hole
Castor Type	Swivel
Head Dia (mm)	48
Height (mm)	99
Bearing Type	Plain
Swivel Radius (mm)	66
Wheel Material	Rubber on Polypropylene
Colour / Shore Hardness	Grey Rubber on Polypropylene Rim / 87 Shore A
Fork Thickness (mm)	1.5
Temperature Resistance	-15 °C TO +45 °C
To Suit Fixing Bolt (mm)	10
Tread (mm)	24
Load Capacity (kg)	50