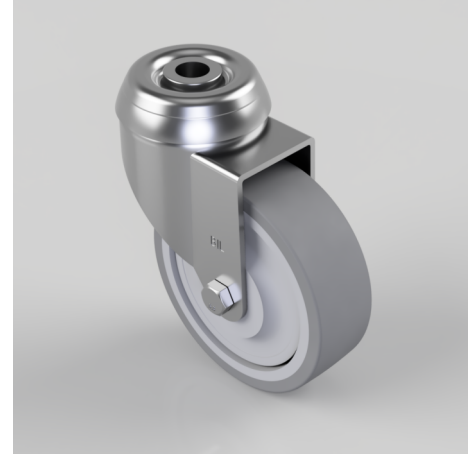


Grey Rubber Bolt Hole Swivel Castor 75mm 60kg Load

Product code: BZD75VGRBJBH10

Pressed steel swivel castor with a 10mm bolt hole fixing fitted with a grey thermoplastic rubber tyred on a grey polypropylene centred wheel with a ball bearing. Wheel diameter 75mm, tread width 24mm, overall height 99mm. Load capacity 60kg.



Diameter (mm)	75
Fixing Option	Bolt Hole
Castor Type	Swivel
Head Dia (mm)	48
Height (mm)	99
Bearing Type	Ball
Swivel Radius (mm)	66
Wheel Material	Rubber on Polypropylene
Colour / Shore Hardness	Grey Rubber on Polypropylene Rim / 87 Shore A
Fork Thickness (mm)	2
Temperature Resistance	-15 °C TO +45 °C
To Suit Fixing Bolt (mm)	10
Tread (mm)	24
Load Capacity (kg)	60