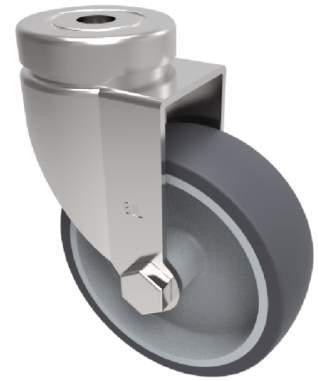


## Grey Rubber Bolt Hole Swivel Castor 75mm 50kg Load

**Product code: BZA75VGRBH10**

Pressed steel swivel castor with 10mm bolt hole fixing fitted with a grey thermoplastic rubber tyre on grey polypropylene centre wheel with plain bore. Wheel diameter 75mm, tread width 24mm, overall height 101mm, Load capacity 50kg.



|                          |   |
|--------------------------|---|
| Diameter (mm)            | 75  |
| Fixing Option            | Bolt Hole                                     |
| Castor Type              | Swivel  |
| Head Dia (mm)            | 41  |
| Height (mm)              | 101   |
| Bearing Type             | Plain   |
| Swivel Radius (mm)       | 68  |
| Wheel Material           | Rubber on Polypropylene                       |
| Colour / Shore Hardness  | Grey Rubber on Polypropylene Rim / 87 Shore A |
| Fork Thickness (mm)      | 2   |
| Temperature Resistance   | -15 °C TO +45 °C                              |
| To Suit Fixing Bolt (mm) | 10  |
| Tread (mm)               | 24  |
| Load Capacity (kg)       | 50  |