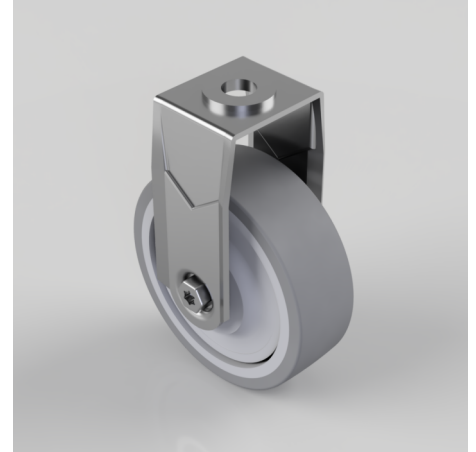


## Grey Rubber Bolt Hole Swivel Castor 75mm 60kg Load

**Product code: BZRAF75VGRBJBH10**

Pressed steel fixed castor with a 10mm bolt hole fitted with a grey thermoplastic rubber tyre on polypropylene centred wheel with ball bearings. Wheel diameter 75mm, tread width 24mm, overall height 101mm with a Load capacity 50kg.

**\*\*MANUFACTURED TO ORDER\*\***



|                          |                                               |
|--------------------------|-----------------------------------------------|
| Diameter (mm)            | 75                                            |
| Fixing Option            | Bolt Hole                                     |
| Castor Type              | Fixed                                         |
| Head Dia (mm)            | 21                                            |
| Height (mm)              | 101                                           |
| Bearing Type             | Ball                                          |
| Wheel Material           | Rubber on Polypropylene                       |
| Colour / Shore Hardness  | Grey Rubber on Polypropylene Rim / 87 Shore A |
| Fork Thickness (mm)      | 1.8                                           |
| Temperature Resistance   | -15 °C TO +80 °C                              |
| To Suit Fixing Bolt (mm) | 10                                            |
| Tread (mm)               | 24                                            |
| Load Capacity (kg)       | 60                                            |