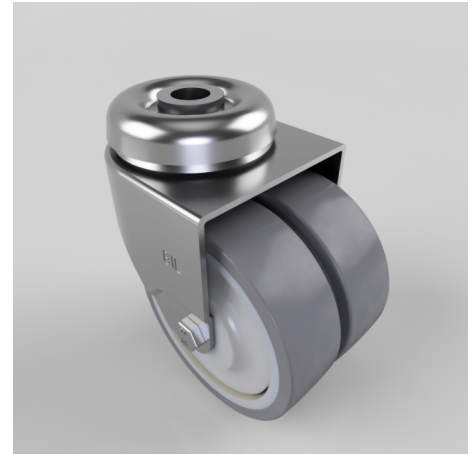


Grey Rubber Bolt Hole Swivel Castor 75mm 90kg Load

Product code: 2BZD75VGRBJBH12

Twin wheeled swivel castor with a 12mm bolt hole fitted with 2 grey thermoplastic rubber tyre on grey polypropylene wheels with ball bearings. Wheel diameter 75mm, tread width 2 x 24mm, overall height 103mm, load capacity 90kg.



Diameter (mm)	75
Fixing Option	Bolt Hole
Castor Type	Swivel
Head Dia (mm)	57
Height (mm)	99
Bearing Type	Ball
Swivel Radius (mm)	70
Wheel Material	Rubber on Polypropylene
Colour / Shore Hardness	Grey Rubber on Polypropylene Rim / 87 Shore A
Fork Thickness (mm)	2
Temperature Resistance	-15 °C TO +45 °C
To Suit Fixing Bolt (mm)	12
Tread (mm)	2 x 24
Load Capacity (kg)	90