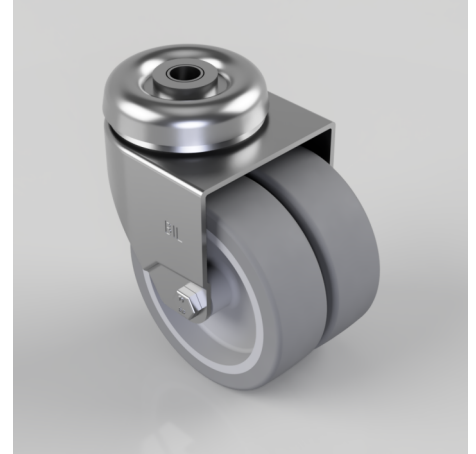


## Grey Rubber Bolt Hole Swivel Castor 75mm 90kg Load

**Product code: 2BZD75VGRBH10**

Twin wheeled swivel castor with a 10mm bolt hole fitted with 2 grey thermoplastic rubber tyre on grey polypropylene wheels with plain bores. Wheel diameter 75mm, tread width 2 x 24mm, overall height 100mm, load capacity 90kg.



Diameter (mm)	75
Fixing Option	Bolt Hole
Castor Type	Swivel
Head Dia (mm)	57
Height (mm)	100
Bearing Type	Plain
Swivel Radius (mm)	70
Wheel Material	Rubber on Polypropylene
Colour / Shore Hardness	Grey Rubber on Polypropylene Rim / 87 Shore A
Fork Thickness (mm)	2
Temperature Resistance	-15 °C TO +45 °C
To Suit Fixing Bolt (mm)	10
Tread (mm)	2 x 24
Load Capacity (kg)	90