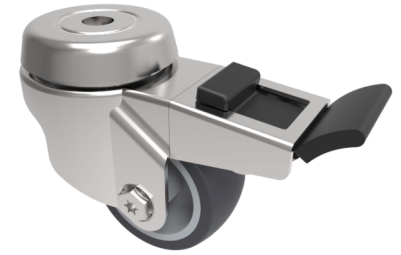


## Grey Rubber Bolt Hole Swivel Castor Brake 50mm 50kg Load

**Product code: BZRA50VGRBJBH10SWB**



Pressed steel swivel castor with a 10mm bolt hole fitted with a grey thermoplastic rubber tyre on polypropylene centred wheel with ball bearings and a total lock brake. Wheel diameter 50mm, tread width 24mm, overall height 74mm with a Load capacity 50kg.

Diameter (mm)	50
Fixing Option	Bolt Hole
Castor Type	Swivel with Total Lock Brake
Head Dia (mm)	46
Height (mm)	74
Bearing Type	Ball
Swivel Radius (mm)	86
Wheel Material	Rubber on Polypropylene
Colour / Shore Hardness	Grey Rubber on Polypropylene Rim / 87 Shore A
Fork Thickness (mm)	1.8
Temperature Resistance	-15 °C TO +80 °C
To Suit Fixing Bolt (mm)	10
Tread (mm)	24
Load Capacity (kg)	50