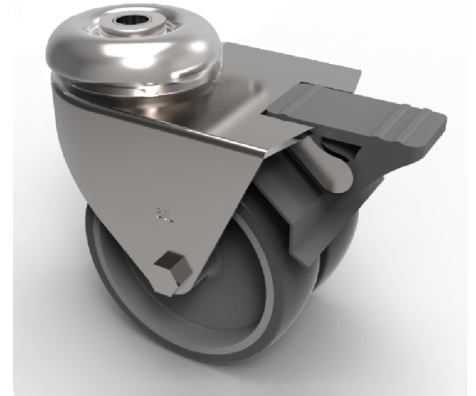


Grey Rubber Bolt Hole Swivel Castor Brake 50mm 60kg Load

Product code: 2BZA50VGRBH10SWB

Pressed steel twin wheel swivel castor with a 10mm bolt hole fixing fitted with 2 grey thermoplastic grey polypropylene centred wheels with plain bore and total lock brake. Wheel diameter 50mm, tread width 18mm x 2, overall height 73mm. Load capacity 60kg.



Diameter (mm)	50
Fixing Option	Bolt Hole
Castor Type	Swivel with Total Lock Brake
Head Dia (mm)	41
Height (mm)	73
Bearing Type	Plain
Swivel Radius (mm)	83
Wheel Material	Rubber on Polypropylene
Colour / Shore Hardness	Grey Rubber on Polypropylene Rim / 87 Shore A
Fork Thickness (mm)	2
Temperature Resistance	-15 °C TO +45 °C
To Suit Fixing Bolt (mm)	10
Tread (mm)	2 x 18
Load Capacity (kg)	60

BIL GROUP LTD

Porte Marsh Road, Calne, Wiltshire, SN11 9BW

Registered in England No: 2603821

VAT Reg: GB572705729

