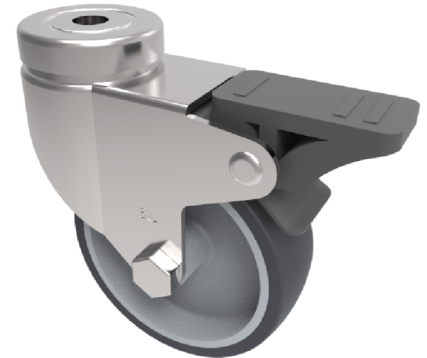


## Grey Rubber Bolt Hole Swivel Castor Brake 60mm 50kg Load

**Product code: BZA60VGRBH10SWB**

Pressed steel swivel castor with a 10mm bolt hole fixing fitted with a grey thermoplastic rubber tyred wheel with a plain bore and a totallock brake. Wheel diameter 60mm, overall height 82mm. Load capacity 50kg.



Diameter (mm)	60
Fixing Option	Bolt Hole
Castor Type	Swivel with Total Lock Brake
Height (mm)	82
Bearing Type	Plain
Swivel Radius (mm)	83
Wheel Material	Rubber on Polypropylene
Colour / Shore Hardness	Grey Rubber on Polypropylene Rim / 87 Shore A
Fork Thickness (mm)	2
Temperature Resistance	-15 °C TO +45 °C
To Suit Fixing Bolt (mm)	10
Tread (mm)	22
Load Capacity (kg)	60