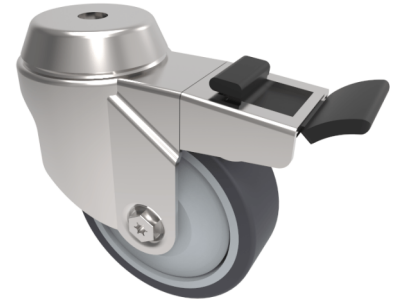


Grey Rubber Bolt Hole Swivel Castor Brake 75mm 60kg Load

Product code: BZRA75VGRBJBH10SWB

Pressed steel swivel castor with a 10mm bolt hole fitted with a grey thermoplastic rubber tyre on polypropylene centred wheel with ball bearings and a total lock brake. Wheel diameter 75mm, tread width 24mm, overall height 101mm with a Load capacity 50kg.



Diameter (mm)	75
Fixing Option	Bolt Hole
Castor Type	Swivel with Total Lock Brake
Head Dia (mm)	46
Height (mm)	101
Bearing Type	Ball
Swivel Radius (mm)	94
Wheel Material	Rubber on Polypropylene
Colour / Shore Hardness	Grey Rubber on Polypropylene Rim / 87 Shore A
Fork Thickness (mm)	1.8
Temperature Resistance	-15 °C TO +80 °C
To Suit Fixing Bolt (mm)	10
Tread (mm)	24
Load Capacity (kg)	60