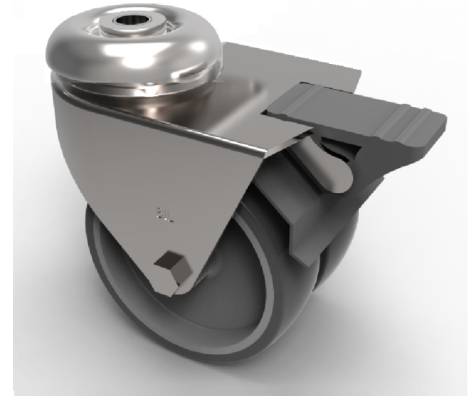


Grey Rubber Bolt Hole Swivel Castor Brake 75mm 80kg Load

Product code: 2BZA75VGRBH10SWB

Twin wheeled pressed steel swivel castor with a top plate fixing fitted with 2 thermoplastic grey rubber tyres on grey polypropylene centred wheels with plain bores with total lock brake. Wheel diameter 75mm, tread width 2 x 24mm, overall height 101mm, Load capacity 80kg.



Diameter (mm)	75
Fixing Option	Bolt Hole
Castor Type	Swivel with Total Lock Brake
Head Dia (mm)	55
Height (mm)	101
Bearing Type	Plain
Swivel Radius (mm)	97
Wheel Material	Rubber on Polypropylene
Colour / Shore Hardness	Grey Rubber on Polypropylene Rim / 87 Shore A
Fork Thickness (mm)	2.5
Temperature Resistance	-15 °C TO +45 °C
To Suit Fixing Bolt (mm)	10
Tread (mm)	2 x 24
Load Capacity (kg)	80