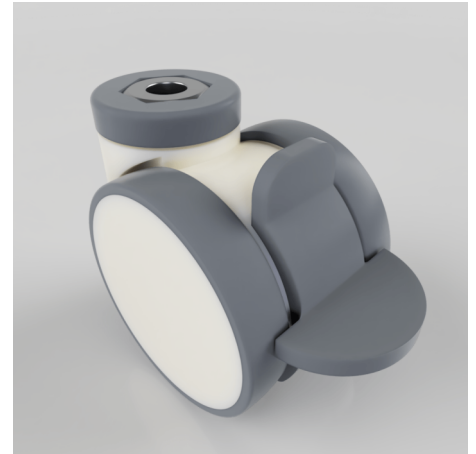


Grey Rubber Bolthole Swivel Castor Brake 75mm 70kg load

Product code: NTW75TPRBJBH12SWB

Twin wheel nylon body swivel castor with bolt hole fixing. Twin grey rubber tyred wheels with ball bearings and total lock brake, Wheel diameter 2 x 75mm, tread width 2 x 15mm, Total castor width 64mm, overall height 86mm. bolt hole 12.5mm, Load capacity 70kg.



Height (mm)	86
Tread (mm)	15 x 2
To Suit Fixing Bolt (mm)	12
Bearing Type	Ball
Diameter (mm)	75
Wheel Material	Grey Rubber on Polypropylene
Fixing Option	Bolt Hole
Castor Type	Swivel with Total Lock Brake
Load Capacity (kg)	70
Shore Hardness	85 Shore A
Swivel Radius (mm)	90

BIL GROUP LTD

Porte Marsh Road, Calne, Wiltshire, SN11 9BW

Registered in England No: 2603821

VAT Reg: GB572705729

