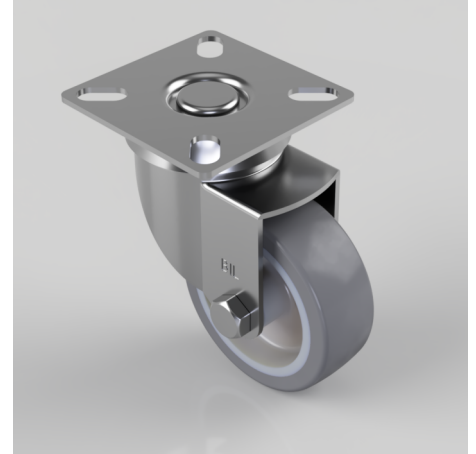


## Grey Rubber Plate Swivel Castor 50mm 40kg Load

**Product code: BZD50TPR**

Pressed steel swivel castor with a top plate fixing fitted with grey thermoplastic rubber tyred on grey polypropylene centred wheel with a Plain Bore. Wheel diameter 50mm, tread width 18mm, overall height 70mm, top plate 50mm x 50mm, hole centres 39mm x 39mm or 31mm x 31mm. Load capacity 40kg.



Diameter (mm)	50
Fixing Option	Plate
Castor Type	Swivel
Plate Size (mm)	50 x 50
Hole Centres (mm)	39 / 31 x 39 / 31
Height (mm)	70
Bearing Type	Plain
Swivel Radius (mm)	48
Wheel Material	Rubber on Polypropylene
Colour / Shore Hardness	Grey Rubber on Polypropylene Rim / 87 Shore A
Top Plate Thickness (mm)	1.5
Fork Thickness (mm)	1.5
Temperature Resistance	-15 °C TO +45 °C
To Suit Fixing Bolt (mm)	6
Tread (mm)	18
Load Capacity (kg)	40

## BIL GROUP LTD

Porte Marsh Road, Calne, Wiltshire, SN11 9BW

Registered in England No: 2603821

VAT Reg: GB572705729

