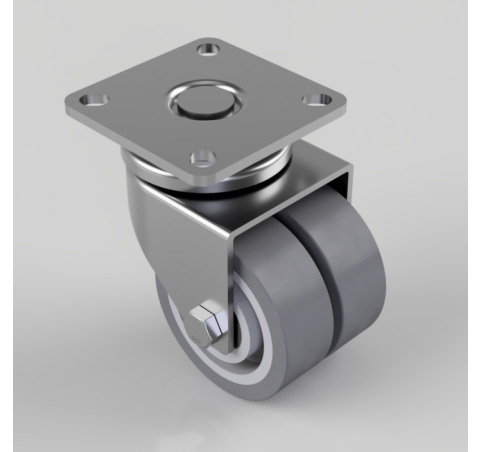


## Grey Rubber Plate Swivel Castor 50mm 60kg Load

**Product code: 2BZD50VGRBJ**

Twin wheeled pressed steel swivel castor with a top plate fixing fitted with 2 thermoplastic grey rubber tyres on 2 grey polypropylene centred wheels with ball bearings. Wheel diameter 50mm, tread width 2 x 18mm, overall height 73mm, plate size 55mm x 55mm, hole centres 42mm x 42mm or 40mm x 40mm. Load capacity 60kg.



Diameter (mm)	50
Fixing Option	Plate
Castor Type	Swivel
Plate Size (mm)	55 x 55
Hole Centres (mm)	40/42 x 40/42
Height (mm)	73
Bearing Type	Ball
Swivel Radius (mm)	49
Wheel Material	Rubber on Polypropylene
Colour / Shore Hardness	Grey Rubber on Polypropylene Rim / 87 Shore A
Top Plate Thickness (mm)	3
Fork Thickness (mm)	2
Temperature Resistance	-15 °C TO +45 °C
To Suit Fixing Bolt (mm)	6
Tread (mm)	2 x 18
Load Capacity (kg)	60

## BIL GROUP LTD

Porte Marsh Road, Calne, Wiltshire, SN11 9BW

Registered in England No: 2603821

VAT Reg: GB572705729

