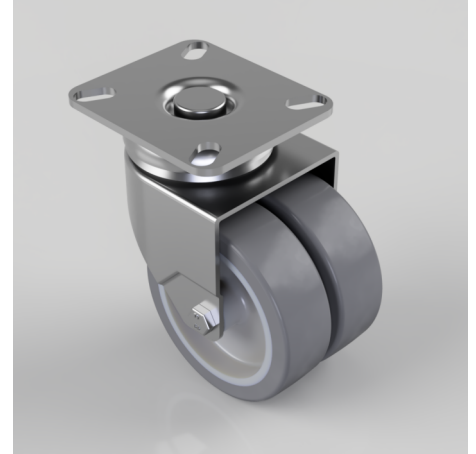


Grey Rubber Plate Swivel Castor 75mm 90kg Load

Product code: 2BZD75VGR

Twin wheeled swivel castor with a top plate fixing fitted with 2 grey thermoplastic rubber tyre on grey polypropylene wheels with plain bores. Wheel diameter 75mm, tread width 2 x 24mm, overall height 103mm, plate size 77mm x 67mm, hole centres 61mm x 56mm or 56mm x 46mm. Load capacity 90kg.



Diameter (mm)	75
Fixing Option	Plate
Castor Type	Swivel
Plate Size (mm)	77 x 67
Hole Centres (mm)	56/46 x 61/56
Height (mm)	103
Bearing Type	Plain
Swivel Radius (mm)	70
Wheel Material	Rubber on Polypropylene
Colour / Shore Hardness	Grey Rubber on Polypropylene Rim / 87 Shore A
Top Plate Thickness (mm)	3
Fork Thickness (mm)	2
Temperature Resistance	-15 °C TO +45 °C
To Suit Fixing Bolt (mm)	8
Tread (mm)	2 x 24
Load Capacity (kg)	90

BIL GROUP LTD

Porte Marsh Road, Calne, Wiltshire, SN11 9BW

Registered in England No: 2603821

VAT Reg: GB572705729

