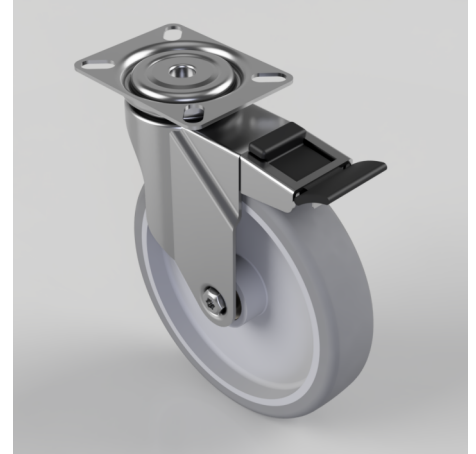


Grey Rubber Plate Swivel Castor Brake 150mm 100kg Load

Product code: BZM150VGRBJSWB

Pressed steel swivel castor with a top plate fixing fitted with a grey thermoplastic rubber tyre on polypropylene centred wheel with ball bearing and a total lock brake. Wheel diameter 150mm, tread width 32mm, overall height 181mm, top plate 90mm x 70mm, hole centres 75mm x 56mm or 64mm x 44mm. Load capacity 100kg. ****Manufactured to Order****



Diameter (mm)	150
Fixing Option	Plate
Castor Type	Swivel with Total Lock Brake
Plate Size (mm)	90 x 70
Hole Centres (mm)	64/75 x 44/56
Height (mm)	181
Bearing Type	Ball
Swivel Radius (mm)	120
Wheel Material	Rubber on Polypropylene
Colour / Shore Hardness	Grey Rubber on Polypropylene Rim / 87 Shore A
Top Plate Thickness (mm)	2
Fork Thickness (mm)	2
Temperature Resistance	-15 °C TO +80 °C
To Suit Fixing Bolt (mm)	8
Tread (mm)	32
Load Capacity (kg)	100

BIL GROUP LTD

Porte Marsh Road, Calne, Wiltshire, SN11 9BW

Registered in England No: 2603821

VAT Reg: GB572705729

