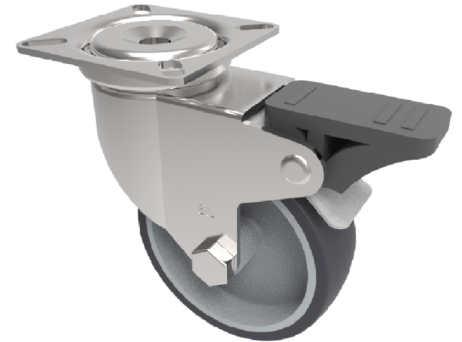


Grey Rubber Plate Swivel Castor Brake 60mm 50kg Load

Product code: BZA60VGRSWB

Pressed steel swivel castor with top plate fixing fitted with a grey thermoplastic rubber tyre on grey polypropylene centre wheel with plain bore and a total lock brake. Wheel diameter 60mm, tread width 22mm, overall height 82mm, plate size 60mm x 60mm, hole centres 46mm x 46. Load capacity 50kg.



Diameter (mm)	60
Fixing Option	Plate
Castor Type	Swivel with Total Lock Brake
Plate Size (mm)	60 x 60
Hole Centres (mm)	46 x 46
Height (mm)	82
Bearing Type	Plain
Swivel Radius (mm)	83
Wheel Material	Rubber on Polypropylene
Colour / Shore Hardness	Grey Rubber on Polypropylene Rim / 87 Shore A
Top Plate Thickness (mm)	2
Fork Thickness (mm)	2
Temperature Resistance	-15 °C TO +45 °C
To Suit Fixing Bolt (mm)	6
Tread (mm)	22
Load Capacity (kg)	60