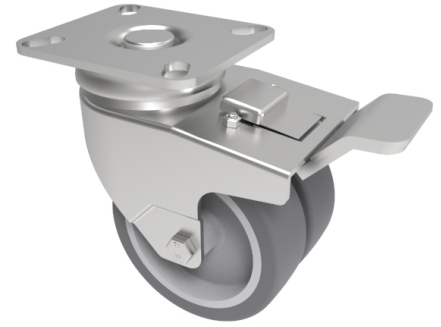


## Grey Rubber Plate Swivel Castor Brake 75mm 90kg Load

**Product code: 2BZD75VGRSWB**



Twin wheeled swivel castor with a top plate fixing fitted with 2 grey thermoplastic rubber tyre on grey polypropylene wheels with plain bores and total lock brake. Wheel diameter 75mm, tread width 2 x 24mm, overall height 103mm, plate size 77mm x 67mm, hole centres 61mm x 51mm or 56mm x 46mm. Load capacity 90kg.

Diameter (mm)	75
Fixing Option	Plate
Castor Type	Swivel with Total Lock Brake
Plate Size (mm)	65 x 65
Hole Centres (mm)	56/46 x 61/56
Height (mm)	103
Bearing Type	Plain
Swivel Radius (mm)	84
Wheel Material	Rubber on Polypropylene
Colour / Shore Hardness	Grey Rubber on Polypropylene Rim / 87 Shore A
Top Plate Thickness (mm)	3
Fork Thickness (mm)	2
Temperature Resistance	-15 °C TO +45 °C
To Suit Fixing Bolt (mm)	8
Tread (mm)	2 x 24
Load Capacity (kg)	90

### BIL GROUP LTD

Porte Marsh Road, Calne, Wiltshire, SN11 9BW

Registered in England No: 2603821

VAT Reg: GB572705729

