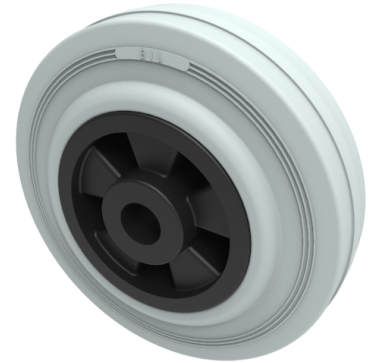


Grey Rubber Polypropylene 125mm Plain Bearing Wheel 90kg Load

Product code: BZMM125WGR



Grey rubber tyre on black polypropylene centre with a plain bearing. Wheel diameter 125mm, Tread width 37.5mm, bore size 15mm, hub length 45mm, load capacity 90kg.

Diameter (mm)	125
Load Capacity (kg)	90
Wheel Material	Rubber on Polypropylene
Bearing Type	Plain
Tread (mm)	37.5
Hub Width (mm)	45
Bore Size (mm)	15
Colour / Shore Hardness	Grey Rubber on Polypropylene Rim / 85 Shore A
Temperature Resistance	-20 °C TO +60 °C

BIL GROUP LTD

Porte Marsh Road, Calne, Wiltshire, SN11 9BW

Registered in England No: 2603821

VAT Reg: GB572705729

