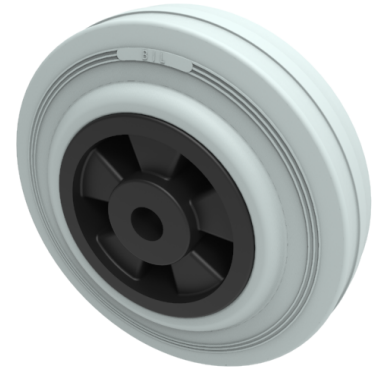


Grey Rubber Polypropylene 125mm Plain Bearing Wheel 90kg Load

Product code: BZML125WGR12



Grey rubber tyre on black polypropylene centre with a plain bearing. Wheel diameter 125mm, Tread width 37.5mm, bore size 12mm, hub length 40mm, load capacity 90kg.

Wheel Material	Rubber on Polypropylene
Diameter (mm)	125
Load Capacity (kg)	90
Bearing Type	Plain
Bore Size (mm)	12
Tread (mm)	37.5
Hub Width (mm)	40
Colour / Shore Hardness	Grey Rubber on Polypropylene Rim / 85 Shore A
Temperature Resistance	-20 °C TO +60 °C

BIL GROUP LTD

Porte Marsh Road, Calne, Wiltshire, SN11 9BW

Registered in England No: 2603821

VAT Reg: GB572705729

