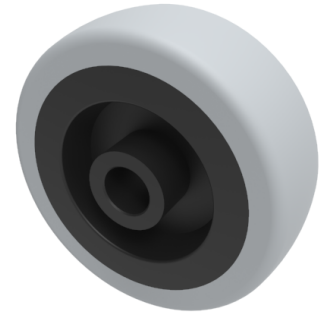


## Grey Rubber Polypropylene 50mm Plain Bearing Wheel 40kg Load

**Product code: BZA50WGR**



Grey rubber tyre on black polypropylene centred wheel, 50 mm wheel diameter, 18mm tread width, 8mm bore, 21mm hub width. 40 kgs load capacity

Wheel Material	Rubber on Polypropylene
Diameter (mm)	50
Load Capacity (kg)	40
Bearing Type	Plain
Bore Size (mm)	8
Tread (mm)	18
Hub Width (mm)	21
Colour / Shore Hardness	Grey Rubber on Polypropylene Rim / 85 Shore A
Temperature Resistance	-20 °C TO +60 °C

### BIL GROUP LTD

Porte Marsh Road, Calne, Wiltshire, SN11 9BW

Registered in England No: 2603821

VAT Reg: GB572705729

