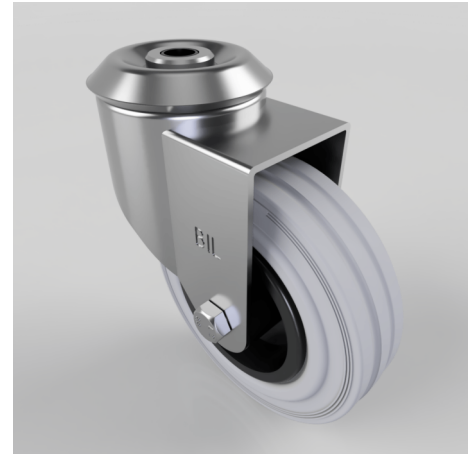


Grey Rubber Polypropylene Bolt Hole Swivel Castor 100mm 70kg Load

Product code: BZBC100GRBBH10

Pressed steel swivel castor with a 10mm bolt hole fixing fitted with a grey rubber tyre on black polypropylene centred wheel with roller bearing. Wheel diameter 100mm, tread width 30mm, overall height 125mm. Load capacity 70kg.



Diameter (mm)	100
Fixing Option	Bolt Hole
Castor Type	Swivel
Head Dia (mm)	60
Height (mm)	126
Bearing Type	Roller
Swivel Radius (mm)	88
Wheel Material	Rubber on Polypropylene
Colour / Shore Hardness	Grey Rubber on Polypropylene Rim / 85 Shore A
Fork Thickness (mm)	2
Temperature Resistance	-20 °C TO +60 °C
To Suit Fixing Bolt (mm)	10
Tread (mm)	30
Load Capacity (kg)	70