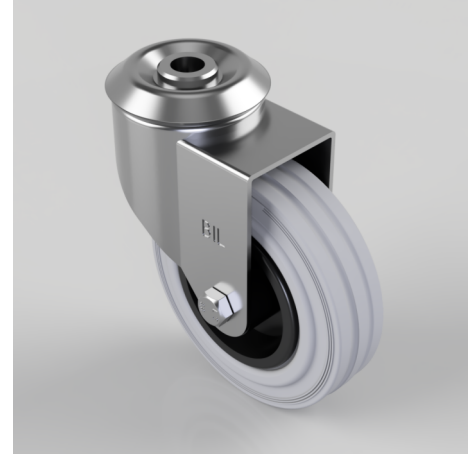


Grey Rubber Polypropylene Bolt Hole Swivel Castor 100mm 70kg Load

Product code: BZBC100GRBBH12

Pressed steel swivel castor with a 12mm bolt hole fitted with a grey rubber tyre on black polypropylene centred wheel with a roller bearing. Wheel diameter 100mm, tread width 30mm, overall height 126mm, Load capacity 70kg.



Diameter (mm)	100
Fixing Option	Bolt Hole
Castor Type	Swivel
Head Dia (mm)	60
Height (mm)	126
Bearing Type	Roller
Swivel Radius (mm)	88
Wheel Material	Rubber on Polypropylene
Colour / Shore Hardness	Grey Rubber on Polypropylene Rim / 85 Shore A
Fork Thickness (mm)	2
Temperature Resistance	-20 °C TO +60 °C
To Suit Fixing Bolt (mm)	12
Tread (mm)	30
Load Capacity (kg)	70