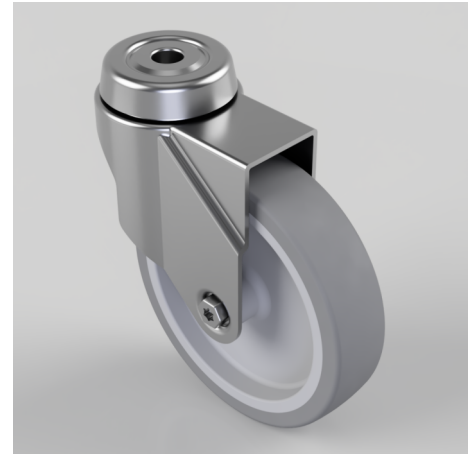


Grey Rubber Polypropylene Bolt Hole Swivel Castor 100mm 70kg Load

Product code: BZRA100GRBH10

Pressed steel swivel castor with a 10mm bolt hole fitted with a grey thermoplastic rubber tyre on polypropylene centred wheel with a plain bore. Wheel diameter 100mm, tread width 24mm, overall height 124mm with a Load capacity 70kg.



Diameter (mm)	100
Fixing Option	Bolt Hole
Castor Type	Swivel
Head Dia (mm)	46
Height (mm)	124
Bearing Type	Plain
Swivel Radius (mm)	90
Wheel Material	Rubber on Polypropylene
Colour / Shore Hardness	Grey Rubber on Polypropylene Rim / 82 Shore A
Fork Thickness (mm)	1.8
Temperature Resistance	-15 °C TO +80 °C
To Suit Fixing Bolt (mm)	10
Tread (mm)	24
Load Capacity (kg)	70