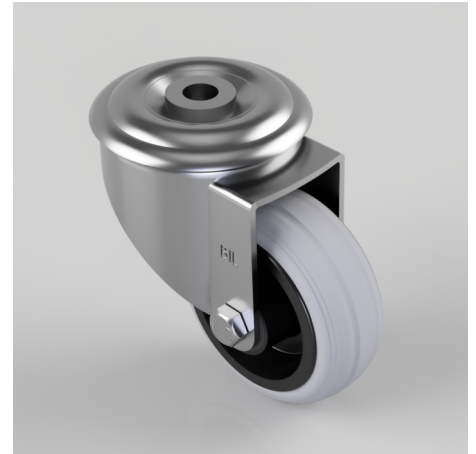


## Grey Rubber Polypropylene Bolt Hole Swivel Castor 80mm 50kg Load

**Product code: BZMM80GRBBH12**

Pressed steel swivel castor with 12mm bolt hole fixing fitted with a grey rubber on black polypropylene centre wheel with roller bearing. Wheel diameter 80mm, tread width 29mm, overall height 105mm. Load capacity 50kg.



Diameter (mm)	80
Castor Type	Swivel
Fixing Option	Bolt Hole
Height (mm)	105
Wheel Material	Rubber on Polypropylene
Colour / Shore Hardness	Grey Rubber on Polypropylene Rim / 85 Shore A
Temperature Resistance	-20 °C TO +60 °C
Bearing Type	Roller
Load Capacity (kg)	50
Tread (mm)	29
Swivel Radius (mm)	78
Head Dia (mm)	76
Fork Thickness (mm)	2.5
To Suit Fixing Bolt (mm)	12