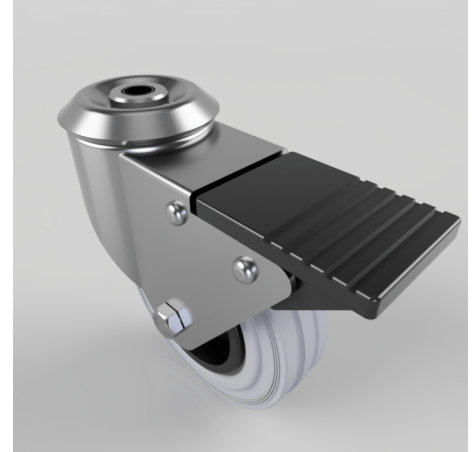


## Grey Rubber Polypropylene Bolt Hole Swivel Castor Brake 100mm 70kg Load

**Product code: BZBC100GRBBH10SWB**

Pressed steel swivel castor with a 10mm bolt hole fixing fitted with a grey rubber tyre on black polypropylene centred wheel with roller bearing and swivel wheel brake. Wheel diameter 100mm, tread width 30mm, overall height 126mm. Load capacity 70kg.



Diameter (mm)	100
Fixing Option	Bolt Hole
Castor Type	Swivel with Total Lock Brake
Head Dia (mm)	60
Height (mm)	126
Bearing Type	Roller
Swivel Radius (mm)	115
Wheel Material	Rubber on Polypropylene
Colour / Shore Hardness	Grey Rubber on Polypropylene Rim / 85 Shore A
Fork Thickness (mm)	2
Temperature Resistance	-20 °C TO +60 °C
To Suit Fixing Bolt (mm)	10
Tread (mm)	30
Load Capacity (kg)	70