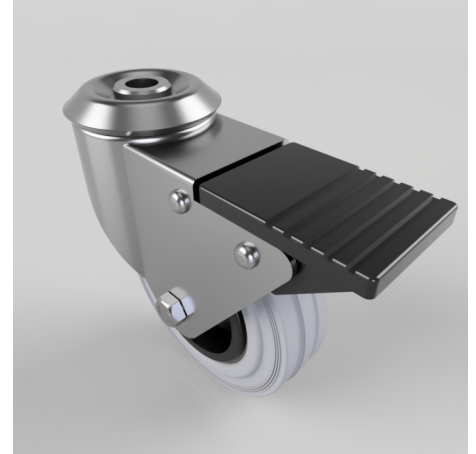


Grey Rubber Polypropylene Bolt Hole Swivel Castor Brake 100mm 70kg Load

Product code: BZBC100GRBBH12SWB

Pressed steel swivel castor with a 12mm bolt hole fixing fitted with a grey rubber tyre on black polypropylene centred wheel with roller bearing and total lock brake. Wheel diameter 100mm, tread width 30mm, overall height 125mm. Load capacity 70kg.



Diameter (mm)	100
Fixing Option	Bolt Hole
Castor Type	Swivel with Total Lock Brake
Head Dia (mm)	60
Height (mm)	126
Bearing Type	Roller
Swivel Radius (mm)	115
Wheel Material	Rubber on Polypropylene
Colour / Shore Hardness	Grey Rubber on Polypropylene Rim / 85 Shore A
Fork Thickness (mm)	2
Temperature Resistance	-20 °C TO +60 °C
To Suit Fixing Bolt (mm)	12
Tread (mm)	30
Load Capacity (kg)	70

BIL GROUP LTD

Porte Marsh Road, Calne, Wiltshire, SN11 9BW

Registered in England No: 2603821

VAT Reg: GB572705729

