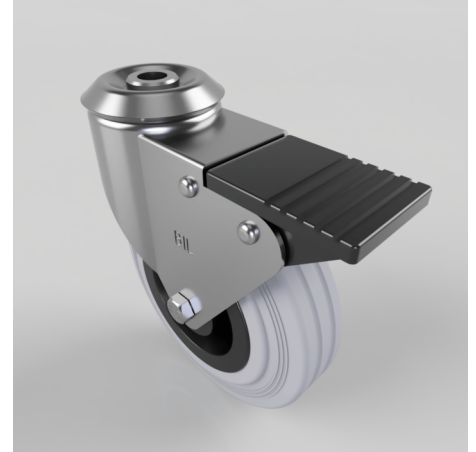


Grey Rubber Polypropylene Bolt Hole Swivel Castor Brake 125mm 90kg Load

Product code: BZBC125GRBBH12SWB

Pressed steel swivel castor with a 12mm bolt hole fixing fitted with a grey rubber tyre on black polypropylene centred wheel with a roller bearing and total lock brake. Wheel diameter 125mm, tread width 37.5mm, overall height 154mm. Load capacity 90kg.



Diameter (mm)	125
Fixing Option	Bolt Hole
Castor Type	Swivel with Total Lock Brake
Head Dia (mm)	60
Height (mm)	154
Bearing Type	Roller
Swivel Radius (mm)	115
Wheel Material	Rubber on Polypropylene
Colour / Shore Hardness	Grey Rubber on Polypropylene Rim / 85 Shore A
Fork Thickness (mm)	2
Temperature Resistance	-20 °C TO +60 °C
To Suit Fixing Bolt (mm)	12
Tread (mm)	37.5
Load Capacity (kg)	90