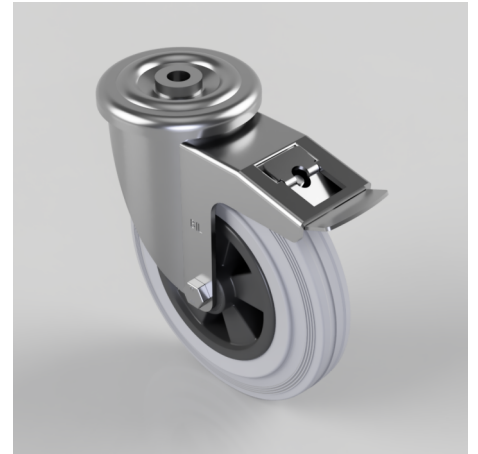


## Grey Rubber Polypropylene Bolt Hole Swivel Castor Brake 200mm 205kg

**Product code: BZMM200GRBBH16SWB**

Pressed steel swivel castor with a 16mm bolt hole fitted with a grey rubber tyred black polypropylene centred wheel with a roller bearing and total lock brake. Wheel diameter 200mm, tread width 50mm, overall height 235mm, Load capacity 205kg.



Diameter (mm)	200
Castor Type	Swivel with Total Lock Brake
Fixing Option	Bolt Hole
Height (mm)	238
Wheel Material	Rubber on Polypropylene
Colour / Shore Hardness	Grey Rubber on Polypropylene Rim / 85 Shore A
Temperature Resistance	-20 °C TO +60 °C
Bearing Type	Roller
Load Capacity (kg)	205
Tread (mm)	46
Swivel Radius (mm)	167
Head Dia (mm)	114
Fork Thickness (mm)	4
To Suit Fixing Bolt (mm)	16