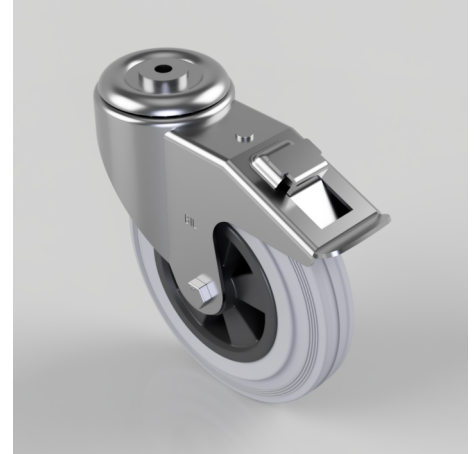


Grey Rubber Polypropylene Bolt Hole Swivel Castor Brake 200mm 205kg

Product code: BZMM200GRBBH12SWB

Pressed steel swivel castor with a 12mm bolt hole fitted with a grey rubber tyred black polypropylene centred wheel with a roller bearing and total lock brake. Wheel diameter 200mm, tread width 46mm, overall height 235mm, Load capacity 205kg.



Diameter (mm)	200
Castor Type	Swivel with Total Lock Brake
Fixing Option	Bolt Hole
Height (mm)	235
Wheel Material	Rubber on Polypropylene
Colour / Shore Hardness	Grey Rubber on Polypropylene Rim / 85 Shore A
Temperature Resistance	-20 °C TO +60 °C
Bearing Type	Roller
Load Capacity (kg)	205
Tread (mm)	46
Swivel Radius (mm)	183
Head Dia (mm)	90
Fork Thickness (mm)	3
To Suit Fixing Bolt (mm)	12

BIL GROUP LTD

Porte Marsh Road, Calne, Wiltshire, SN11 9BW

Registered in England No: 2603821

VAT Reg: GB572705729

