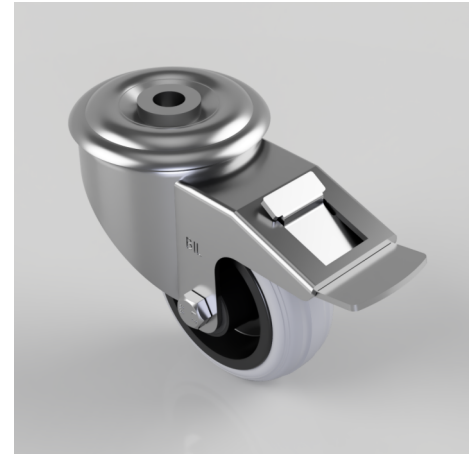


Grey Rubber Polypropylene Bolt Hole Swivel Castor Brake 80mm 50kg Load

Product code: BZMM80GRBBH12SWB

Pressed steel swivel castor with 12mm bolt hole fixing fitted with a grey rubber tyre on black polypropylene centre wheel with roller bearing and total lock brake. Wheel diameter 80mm, tread width 29mm, overall height 105mm. Load capacity 50kg.



Diameter (mm)	80
Castor Type	Swivel with Total Lock Brake
Fixing Option	Bolt Hole
Height (mm)	105
Wheel Material	Rubber on Polypropylene
Colour / Shore Hardness	Grey Rubber on Polypropylene Rim / 85 Shore A
Temperature Resistance	-20 °C TO +60 °C
Bearing Type	Roller
Load Capacity (kg)	50
Tread (mm)	29
Swivel Radius (mm)	112
Head Dia (mm)	76
Fork Thickness (mm)	2.5
To Suit Fixing Bolt (mm)	12