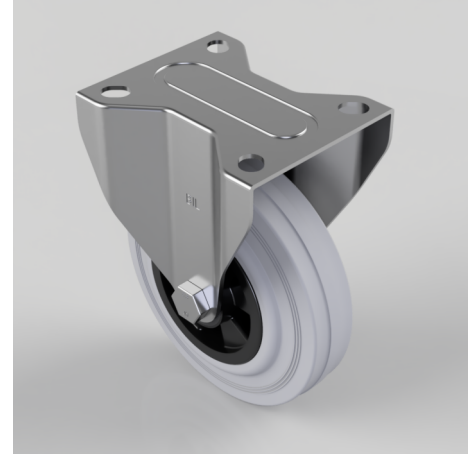


Grey Rubber Polypropylene Plate Fixed Castor 125mm 90kg Load

Product code: BZMMF125GRB

Pressed steel fixed castor with top plate fixing fitted with grey rubber tyre on black polypropylene centre wheel with roller bearing. Wheel diameter 125mm, tread width 37.5mm, overall height 155mm, plate size 105mm x 85mm, hole centres 80mm x 60mm. Load capacity 90kg.



Diameter (mm)	125
Castor Type	Fixed
Fixing Option	Plate
Height (mm)	155
Wheel Material	Rubber on Polypropylene
Colour / Shore Hardness	Grey Rubber on Polypropylene Rim / 85 Shore A
Temperature Resistance	-20 °C TO +60 °C
Bearing Type	Roller
Load Capacity (kg)	90
Tread (mm)	37.5
Plate Size (mm)	105 X 85
Hole Centres (mm)	80 X 60
Top Plate Thickness (mm)	2
Fork Thickness (mm)	2
To Suit Fixing Bolt (mm)	8

BIL GROUP LTD

Porte Marsh Road, Calne, Wiltshire, SN11 9BW

Registered in England No: 2603821

VAT Reg: GB572705729

