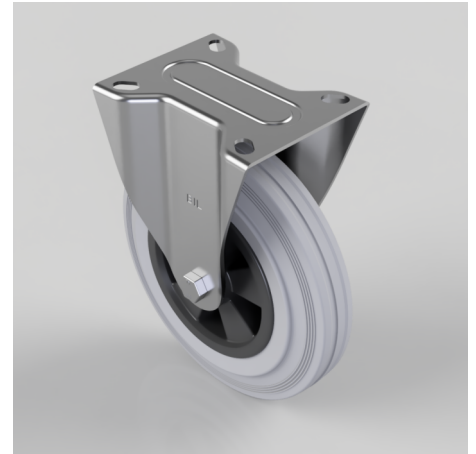


Grey Rubber Polypropylene Plate Fixed Castor 200mm 205kg Load

Product code: BZMMF200GRB

Pressed steel fixed castor with top plate fixing fitted with grey rubber tyre on polypropylene centred wheel with roller bearings. Wheel diameter 200mm, tread width 46mm, overall height 235mm, plate size 137mm x 110mm, hole centres 105mm x 80mm. Load capacity 205kg.



Diameter (mm)	200
Castor Type	Fixed
Fixing Option	Plate
Height (mm)	235
Wheel Material	Rubber on Polypropylene
Colour / Shore Hardness	Grey Rubber on Polypropylene Rim / 85 Shore A
Temperature Resistance	-20 °C TO +60 °C
Bearing Type	Roller
Load Capacity (kg)	205
Tread (mm)	46
Plate Size (mm)	135 x 110
Hole Centres (mm)	105 x 80
Top Plate Thickness (mm)	2.5
Fork Thickness (mm)	2.5
To Suit Fixing Bolt (mm)	10