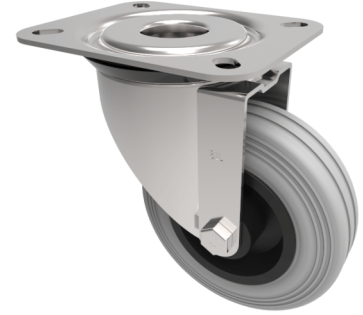


## Grey Rubber Polypropylene Plate Swivel Castor 100mm 70kg Load

**Product code: BZRMM100GR**



Pressed steel swivel castor with a top plate fixing fitted with a grey rubber wheel, polypropylene centre with a plain bore. Wheel diameter 100mm, tread width 25mm, overall height 128mm, top plate 104mm x 80mm, hole centres 80mm x 60mm or 72mm x 52mm, Load capacity 70kg.

Diameter (mm)	100
Castor Type	Swivel
Fixing Option	Plate
Height (mm)	128
Wheel Material	Rubber on Polypropylene
Colour / Shore Hardness	Grey Rubber on Polypropylene Rim / 85 Shore A
Temperature Resistance	-20 °C TO +60 °C
Bearing Type	Plain
Load Capacity (kg)	70
Tread (mm)	30
Swivel Radius (mm)	84
Plate Size (mm)	104 x 80
Hole Centres (mm)	80/72 x 60/52
Top Plate Thickness (mm)	2.5
Fork Thickness (mm)	2.5
To Suit Fixing Bolt (mm)	8