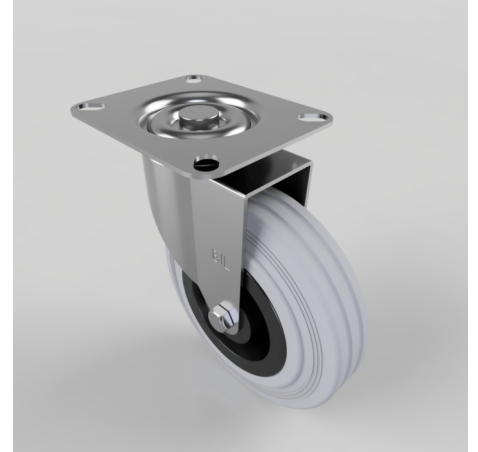


## Grey Rubber Polypropylene Plate Swivel Castor 125mm 90kg Load

**Product code: BZBC125GRB**

Pressed steel swivel castor with a top plate fixing fitted with a grey rubber tyre on black polypropylene centred wheel with a roller bearing. Wheel diameter 125mm, tread width 37.5mm, overall height 154mm, plate size 102mm x 84mm, hole centres 80mm x 60mm. Load capacity 90kg.



|                          |   |
|--------------------------|---|
| Diameter (mm)            | 125   |
| Fixing Option            | Plate   |
| Castor Type              | Swivel  |
| Plate Size (mm)          | 102 x 84                                      |
| Hole Centres (mm)        | 80 X 60                                       |
| Height (mm)              | 154   |
| Bearing Type             | Roller  |
| Swivel Radius (mm)       | 100   |
| Wheel Material           | Rubber on Polypropylene                       |
| Colour / Shore Hardness  | Grey Rubber on Polypropylene Rim / 85 Shore A |
| Top Plate Thickness (mm) | 2   |
| Fork Thickness (mm)      | 2   |
| Temperature Resistance   | -20 °C TO +60 °C                              |
| To Suit Fixing Bolt (mm) | 8   |
| Tread (mm)               | 37.5  |
| Load Capacity (kg)       | 90  |

### BIL GROUP LTD

Porte Marsh Road, Calne, Wiltshire, SN11 9BW

Registered in England No: 2603821

VAT Reg: GB572705729

