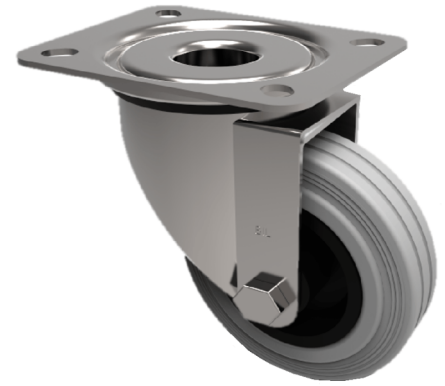


## Grey Rubber Polypropylene Plate Swivel Castor 125mm 90kg Load

**Product code: SSMM125GR**



Grade 304 Pressed stainless steel swivel castor, fitted with a top plate and 125mm grey rubber on black polypropylene wheel, 37.5mm tread width, 155mm overall height, 105 x 85mm top plate, 80 x 60mm bolt holes, with a load capacity of 90kgs.

Diameter (mm)	125
Fixing Option	Plate
Castor Type	Swivel
Height (mm)	155
Wheel Material	Rubber on Polypropylene
Colour / Shore Hardness	Grey Rubber on Polypropylene Rim / 85 Shore A
Bearing Type	Plain
Tread (mm)	37.5
Fork Thickness (mm)	2
To Suit Fixing Bolt (mm)	8
Load Capacity (kg)	90
Temperature Resistance	-20 °C TO +60 °C
Plate Size (mm)	105 X 85
Hole Centres (mm)	80 X 60
Top Plate Thickness (mm)	2
Swivel Radius (mm)	95

### BIL GROUP LTD

Porte Marsh Road, Calne, Wiltshire, SN11 9BW

Registered in England No: 2603821

VAT Reg: GB572705729

